



RESIDENTIAL WASTE COLLECTION GUIDELINES

Service Hours - No earlier than 7:00am and no later than 6:00pm

WCA Customer Service (missed pick-up) – 281-368-8397

Service Days – Tuesday & Friday (Recycle Friday)

Holiday Schedule - WCA observes the following holidays: Christmas, Thanksgiving, Memorial Day, Labor Day, Independence Day, and New Year's Day. Holiday service is provided on the next scheduled service day.

YARD WASTE PROTOCOL

-All bagged grass clippings and leaves will be picked-up from the curb.

-Brush and tree trimmings, cut in lengths not to exceed 3 feet, no greater than 3 inches in diameter, **securely tied in bundles**, not to exceed 45-lbs, will be picked-up from the curb.

REGULAR HOUSEHOLD TRASH - The following items and materials ***will not*** be accepted

Dead Animals	Oil	Power Steering Fluid
Ammunition or Explosives	Insecticides	Transmission Fluid
Arsenic	Flammable Chemicals	Anti-Freeze/Coolant
Chemicals not in original containers	Pool Chemicals	Used Oil Filters
Chemical containers over five (5) gallons	Paint	Herbicides
Mercury	Stain/Varnish	Poison
Nuclear/radioactive waste	Solvent	Pesticides
Fluorescent Light bulbs Unidentified	Batteries	Medical Waste
Chemicals	Thermometers	Propane Tanks
Gasoline		

Heavy Trash - The following items and materials will be accepted

-Household Appliances (Refrigerators must have Freon drained and be tagged accordingly by certified technician)

-Hot Water Heaters-must be drained

-Furniture

-Grills must be emptied of ash or briquettes. **No propane tanks.**

Unaccepted Items

Wood	Stone
Masonry debris	Carpet
Roofing material	Nails
Lawn mowers	Tree trunks
Sheetrock or drywall	Pool filters
Paneling	Water softeners
Windows	Tile
Steel/cast iron building materials	Tires
Insulation	Concrete
Dirt in large quantity	Doors

WCA
PHONE: 281-368-8397

8515 HIGHWAY 6 SOUTH

HOUSTON, TX 77083
FAX: 281-561-7496



Accepted Recyclable Material



Newspaper



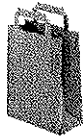
Magazines



Junk Mail



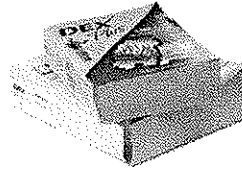
Colored Paper



Paper Bags



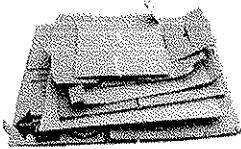
File Folders



Phone Books



Greeting Cards



Cardboard



Paperboard



Plastics #1-#5 & #7



Metal Pots and Pans



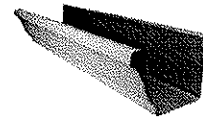
Glass Bottles/Jars



Aluminum Cans/Foil



Steel/Tin Cans



Gutters, Copper, and Scrap

Unacceptable Items

Plastic Bags, Styrofoam, Soiled Pizza Boxes, Coat Hangers, Paint & Solvent Containers, Light Bulbs, Mirrors, Windows, Dishes & Cups, Paper Towels, Napkins, Facial & Toilet Tissue